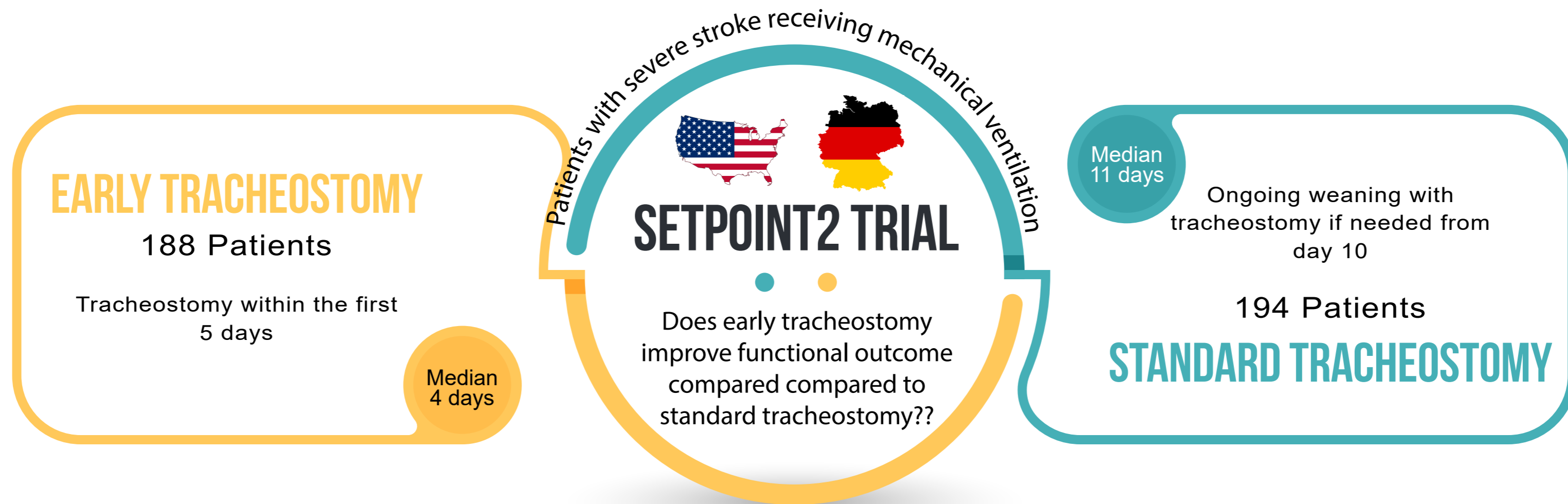
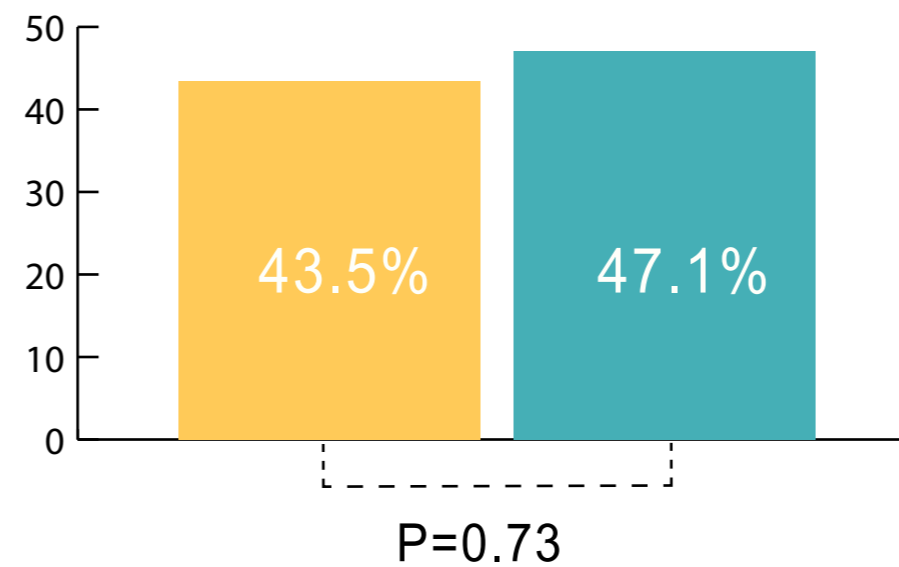


EFFECT OF EARLY VS STANDARD APPROACH TO TRACHEOSTOMY ON FUNCTIONAL OUTCOME AT 6 MONTHS AMONG PATIENTS WITH SEVERE STROKE RECEIVING MECHANICAL VENTILATION



Median age, 59 years; 49.8% women

6-month functional status without severe disability



Difference, -3.6% [95% CI, -14.3% to 7.2%]; adjusted odds ratio, 0.93 [95% CI, 0.60-1.42]; P = .73

CONCLUSION

Early tracheostomy did not change the 6-month functional outcome without severe disability of patients with severe stroke compared to standard approach.