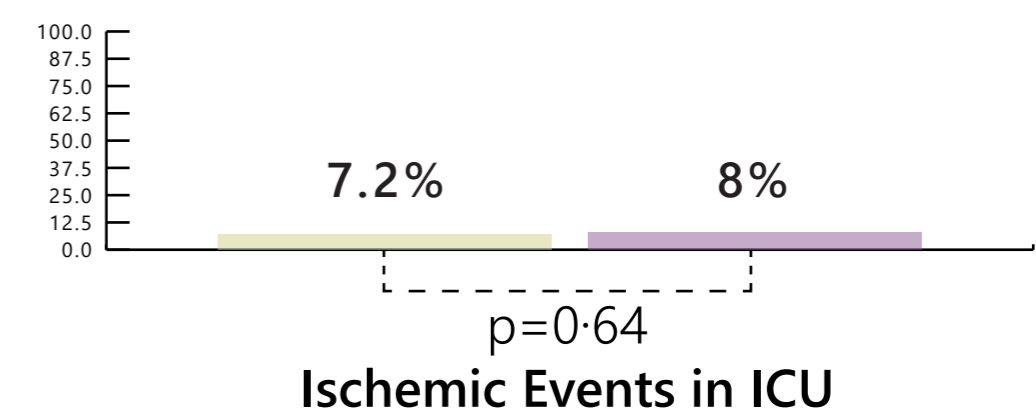
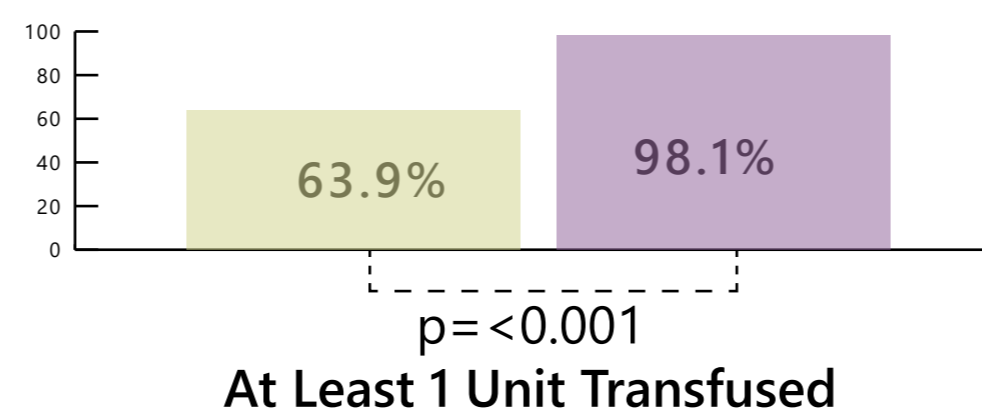
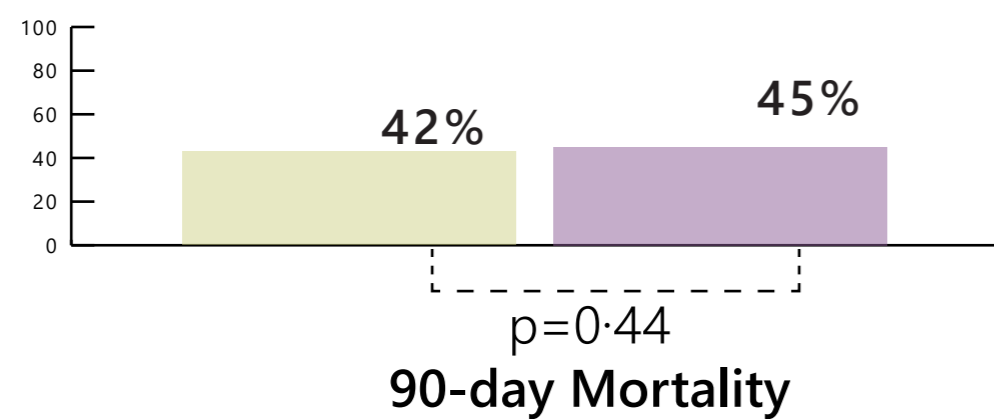
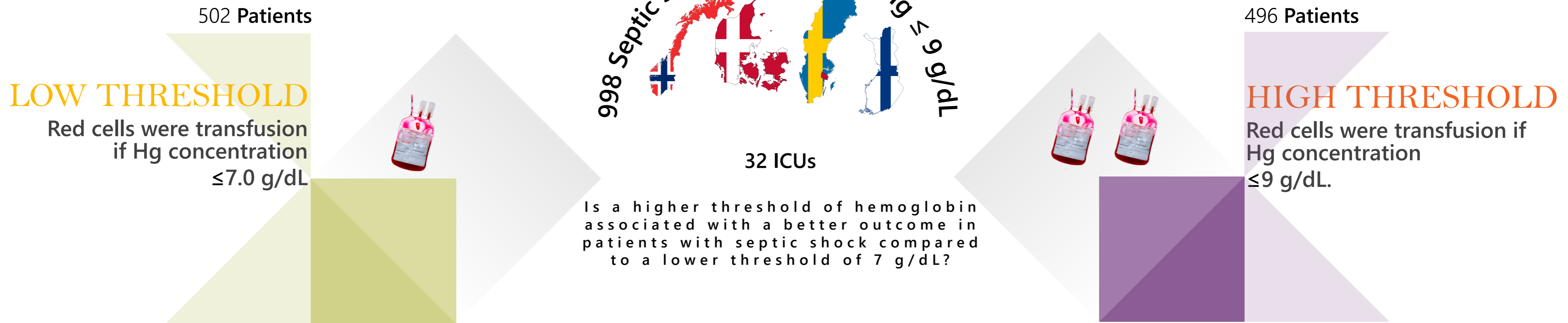


Lower versus Higher Hemoglobin Threshold for Transfusion in Septic Shock

TRISS TRIAL



90-day mortality rate was not different between the lower (7 g/dL) versus the higher (9 g/dL) hemoglobin transfusion threshold in patients with septic shock. A lower threshold group was associated with less use of blood transfusion.

October 9, 2014