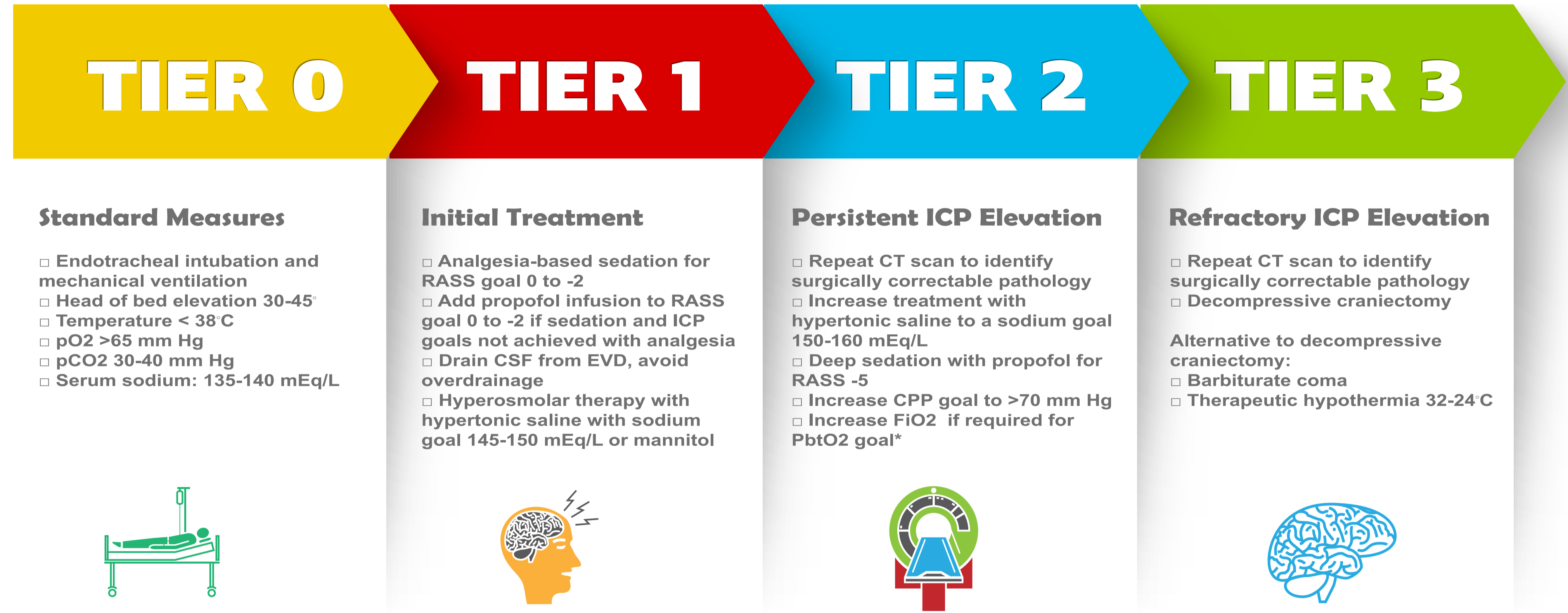


STEPWISE APPROACH TO ELEVATED ICP IN PATIENTS WITH SEVERE TBI



March 20, 2023

DEFINITION

Severe TBI: head trauma with GCS ≤8. ICP elevation >20 mm Hg for > minutes with functional EVD and the patient is not coughing, being suctioned, or agitated.

GOALS

ICP ≤ 22 mmHg
 CPP >60 mmHg
 PbtO₂ > 20 mmHg

ABBREVIATIONS

ICP: intracranial pressure; EVD: External Ventricular Drain; TBI: traumatic brain injury; CPP: cerebral perfusion pressure; PbtO₂: brain tissue oxygen; pO₂: partial pressure of oxygen; pCO₂: partial pressure of carbon dioxide; RASS: Richmond Agitation-Sedation Scale; CSF: cerebrospinal fluid; CT: computed tomography; FiO₂: fraction of inspired oxygen.
 * If advanced monitoring is available