

# GOAL-DIRECTED RESUSCITATION FOR PATIENTS WITH EARLY SEPTIC SHOCK

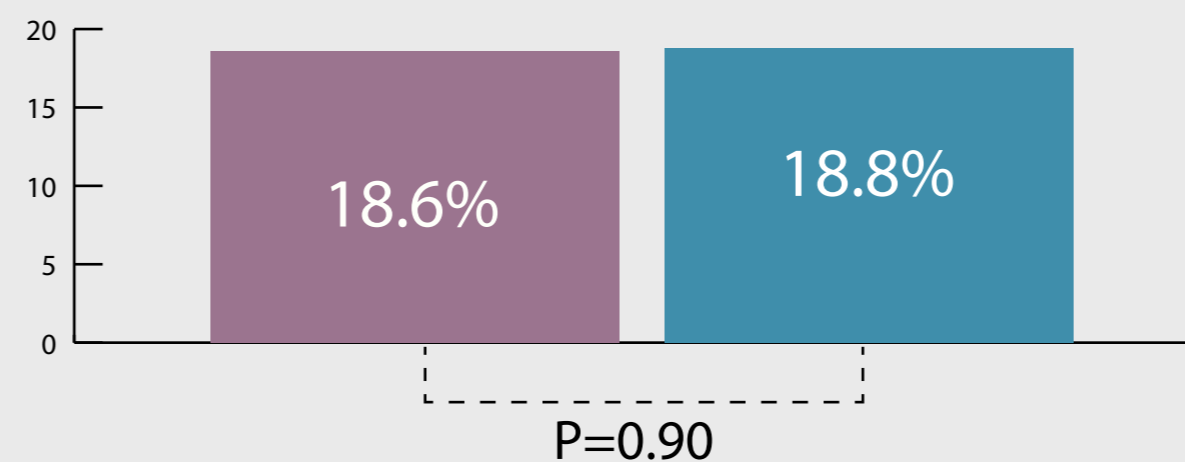
## The ARISE Trial



### EGDT

Central venous catheter capable of continuous ScvO<sub>2</sub> monitoring was placed in 90%.

### 90-day Mortality



### USUAL CARE

61.9% had central line as part of the usual care.

EGDT did not reduce 90-day mortality in patients presenting to the emergency department with septic shock.

October 16, 2014