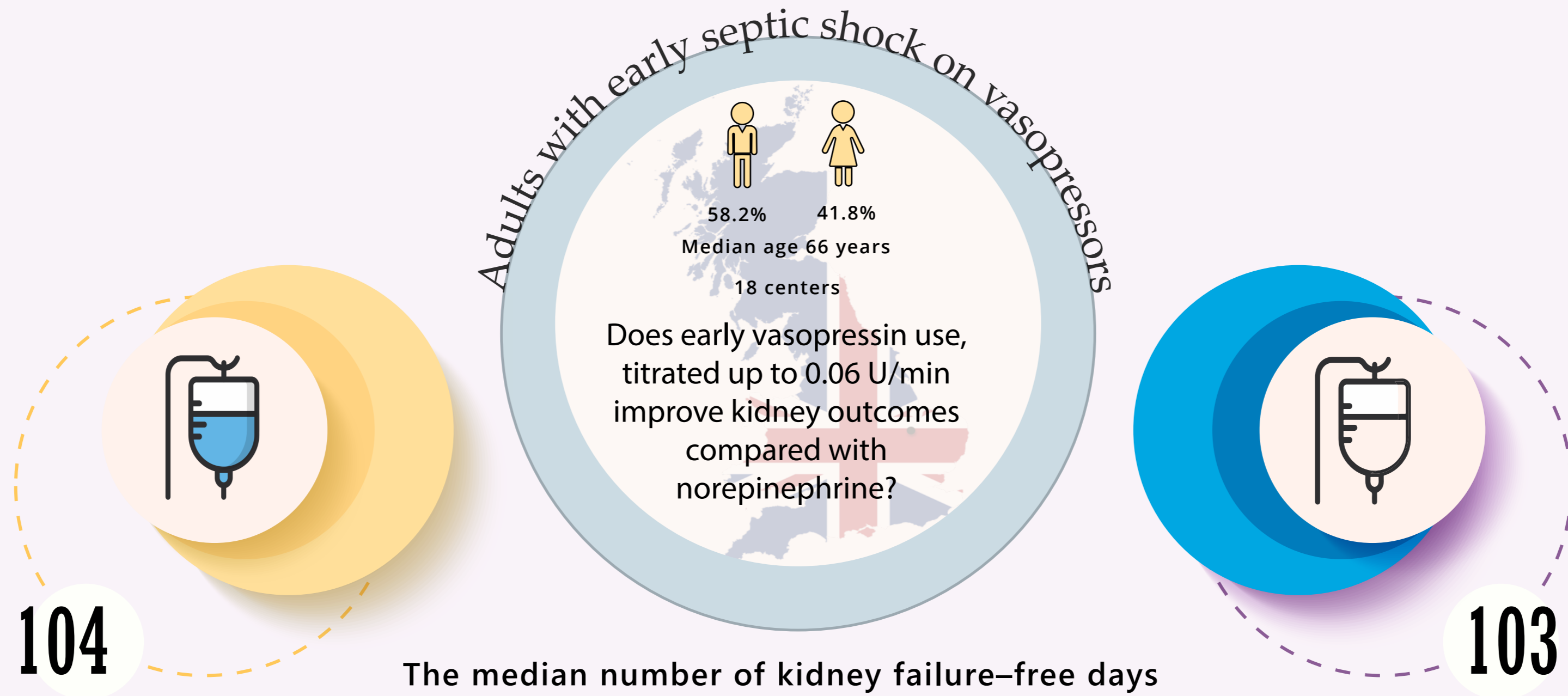


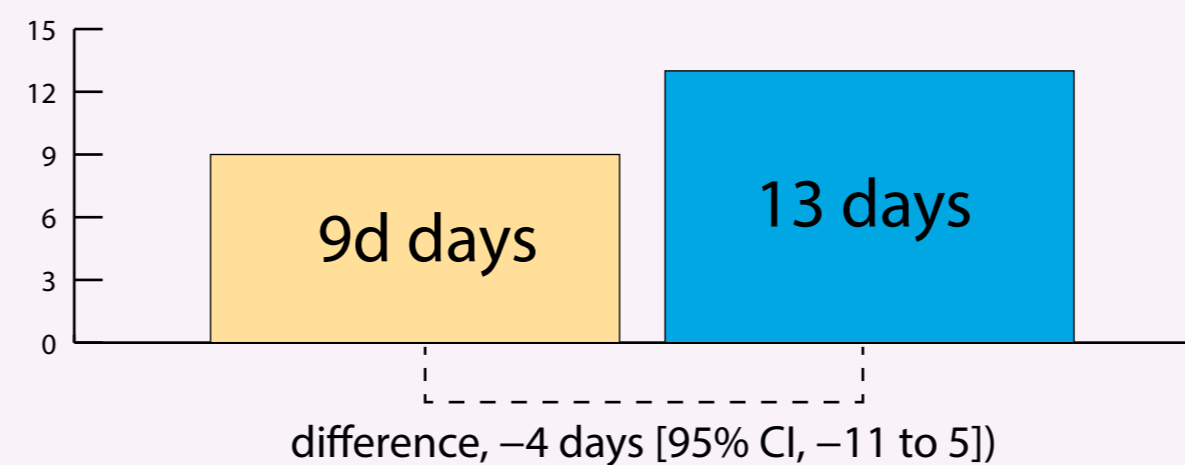
Effect of Early Vasopressin vs Norepinephrine on Kidney Failure in Patients With Septic Shock

The VANISH Randomized Clinical Trial



VASOPRESSIN

Titrated up to 0.06 U/min as the initial vasopressor infusion to maintain the target mean arterial pressure of 65 to 75 mm Hg.



NOREPINEPHRINE

Titrated up as the initial vasopressor infusion to maintain the target mean arterial pressure of 65 to 75 mm Hg.

Early use of vasopressin compared with norepinephrine did not improve the number of kidney failure-free days in adults with septic shock.

August 2, 2016

JAMA
The Journal of the American Medical Association