

**DOPAMINE GROUP**

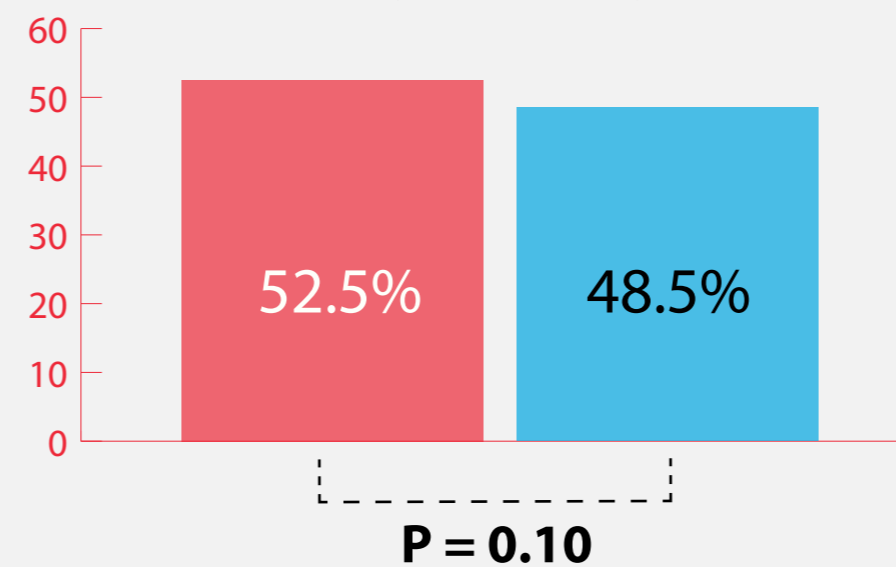
Dopamine was titrated by 2 µg/kg/min up to a maximum dose of 20 µg/kg/min to achieve a mean arterial pressure target of 65 mm Hg.

**NOREPINEPHRINE GROUP**

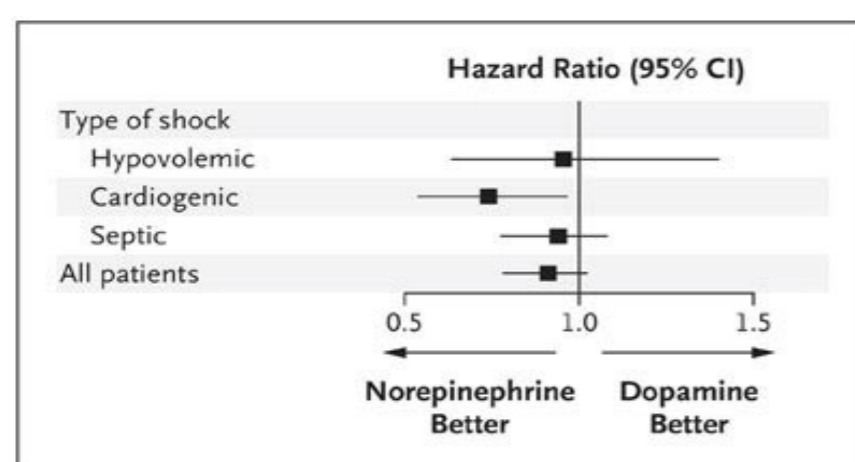
Norepinephrine was titrated by 0.02 µg/kg/min up to a maximum dose of 0.19 µg/kg/min to achieve a mean arterial pressure target of 65 mm Hg.

Does the use of dopamine improve 28-day mortality compared to norepinephrine?

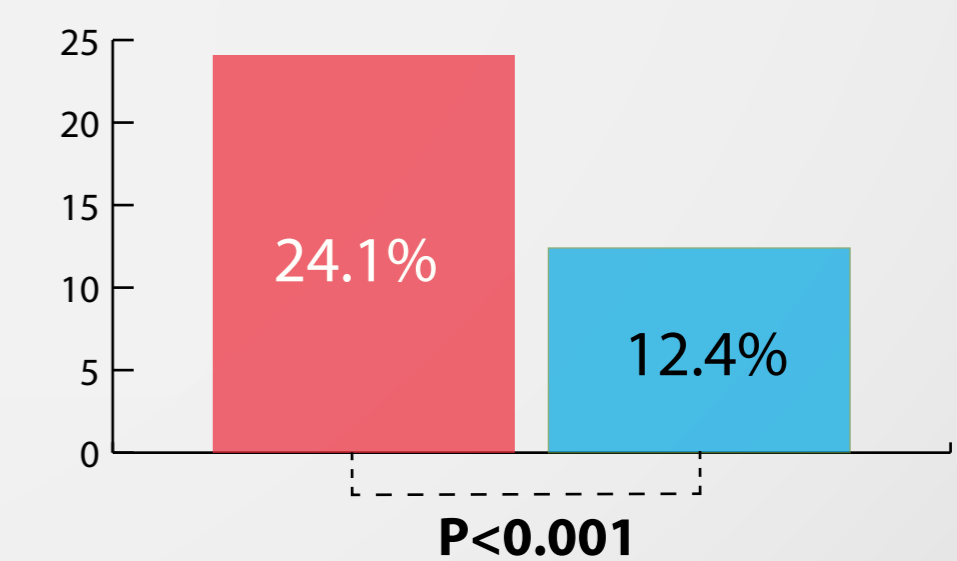
**28-day Mortality**



**Predefined Subgroups**



**Rate of Arrhythmias**



**CONCLUSION**

The rate of death was not different in patients treated with dopamine compared to norepinephrine. However, dopamine caused more arrhythmias in all groups and was associated with higher rate of death in cardiogenic shock patients.