

Mechanically-ventilated ARDS Patients with $PO_2/FiO_2 < 300$

THE ALVEOLI TRIAL

Does the ventilation of high PEEP improve in-hospital mortality rate compared to low PEEP?

MULTICENTER - RANDOMIZED



23 Hospitals

High PEEP

Low tidal volume ventilation with 6 ml/kg/breath (ideal body weight) and plateau pressure < 30 cm water.

Mean (\pm SD) PEEP values on days 1 through 4 were 13.2 ± 3.5 cm of water

276 PATIENTS

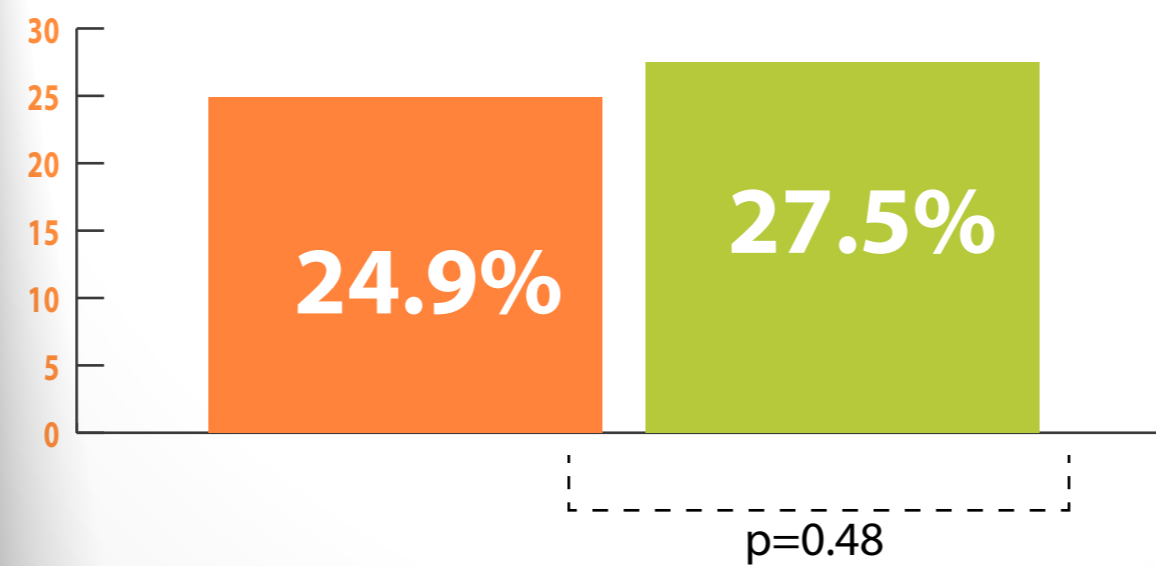
LOW PEEP

Low tidal volume ventilation with 6 ml/kg/breath (ideal body weight) and plateau pressure <30 cm H₂O.

Mean (\pm SD) PEEP values on days 1 through 4 were 8.3 ± 3.2 cm of water

273 PATIENTS

In-hospital Mortality



Mean ventilator-free days
(13.8 ± 10.6 days vs 14.5 ± 10.4 days, $p=0.5$)

Clinical outcome is not different between high vs low PEEP strategy in ARDS patients treated with a low tidal-volume and limited plateau-pressure of <30 cm of water.