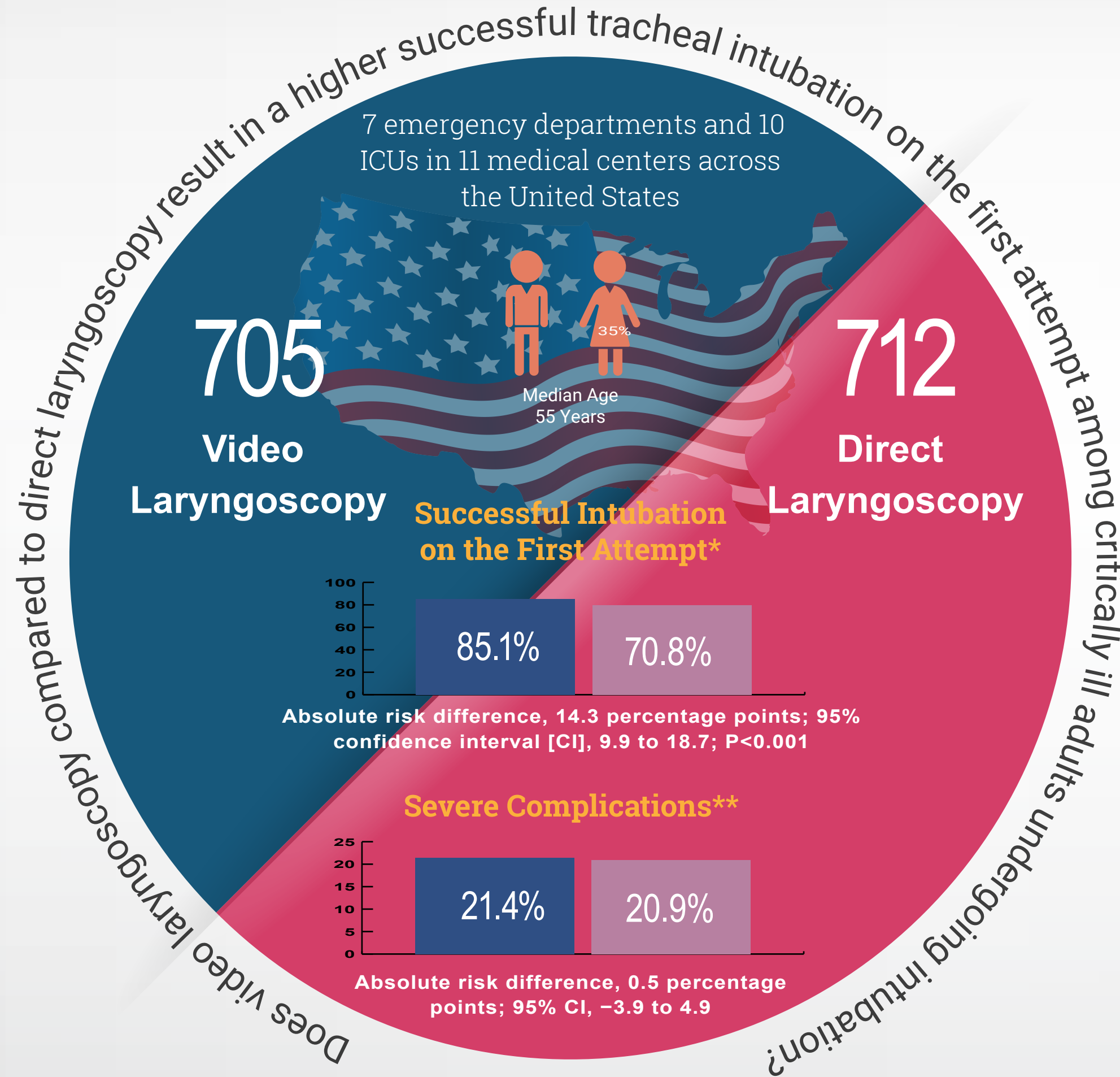


# Video versus Direct Laryngoscopy for Tracheal Intubation of Critically Ill Adults

A PRAGMATIC, MULTICENTER, UNBLINDED, RANDOMIZED, PARALLEL-GROUP TRIAL



**\*Successful Intubation on the First Attempt:**

Placement of an endotracheal tube in the trachea with a single insertion of a laryngoscope blade into the mouth and either a single insertion of an endotracheal tube into the mouth or a single insertion of a bougie into the mouth followed by a single insertion of an endotracheal tube into the mouth.

**\*\*Severe Complications:**

Severe hypoxemia (peripheral oxygen saturation, <80%), severe hypotension (systolic blood pressure, <65 mm Hg), new or increased use of vasopressors, cardiac arrest, or death.

Among critically ill adults undergoing tracheal intubation in an emergency department or ICU, the use of a video laryngoscope resulted in a higher incidence of successful intubation on the first attempt than the use of a direct laryngoscope.