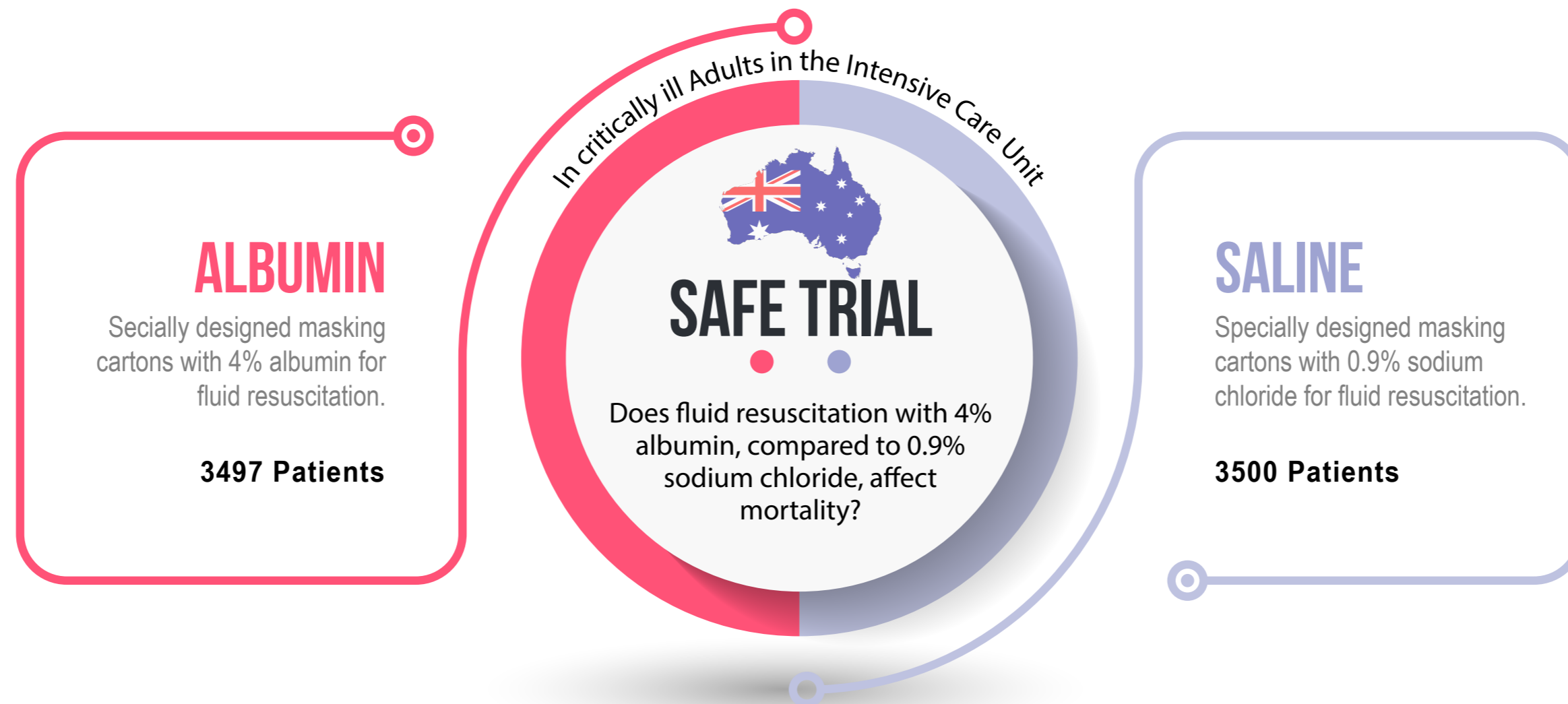


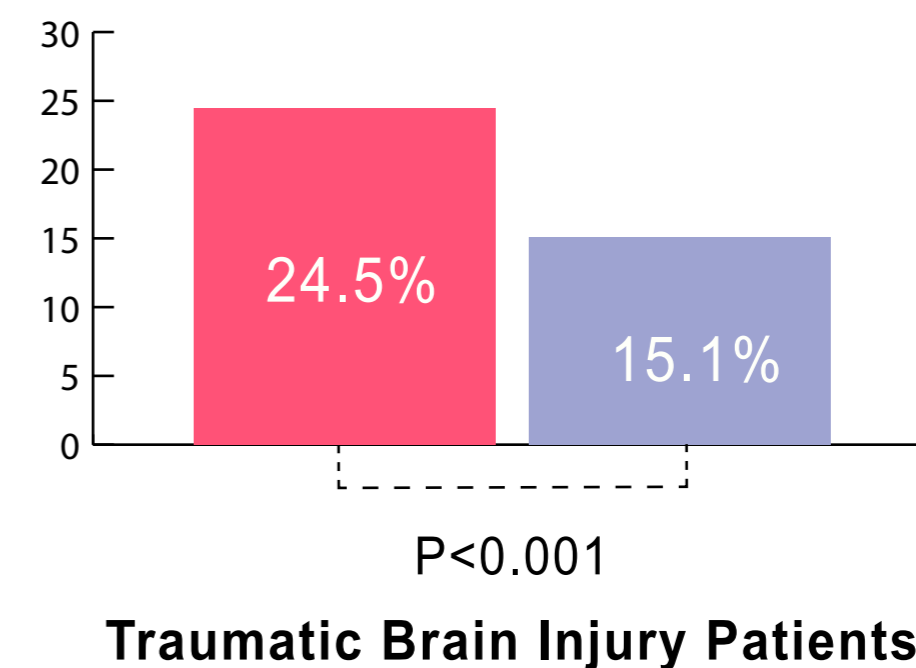
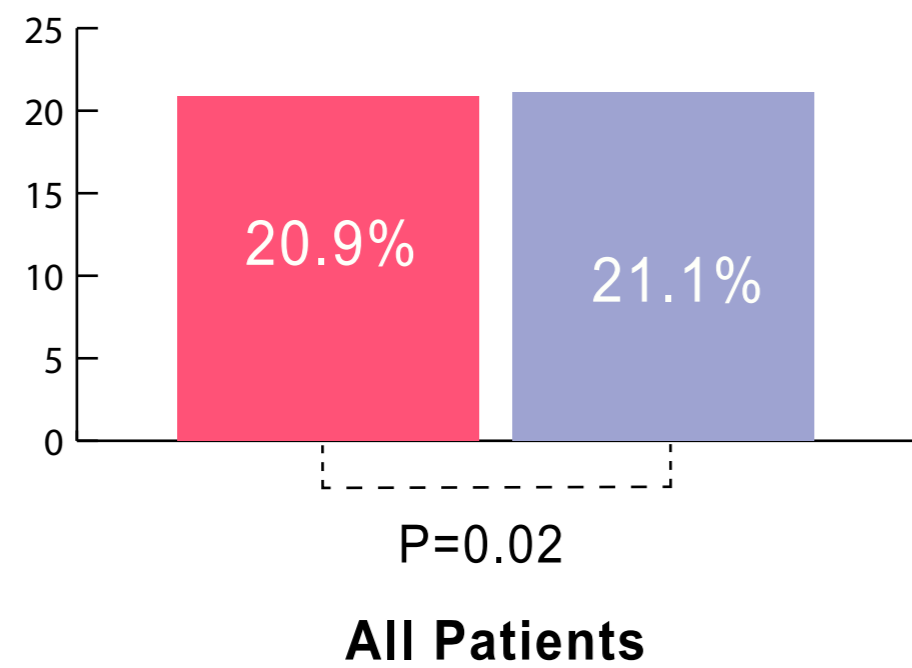
A COMPARISON OF ALBUMIN AND SALINE FOR FLUID RESUSCITATION IN THE INTENSIVE CARE UNIT



May 27, 2004



28-day Mortality



CONCLUSION

28-day mortality is similar for all patients when compared to the resuscitation with 4% albumin or 0.9% sodium chloride. However, patients with traumatic brain injury had a higher mortality with albumin.