

Patients in the ICU with Shock



DOPAMINE
858 PATIENTS

SOAP-I TRIAL

NOREPINEPHRINE
821 PATIENTS

8 Centers

Does the use of dopamine improve 28-day mortality compared to norepinephrine?

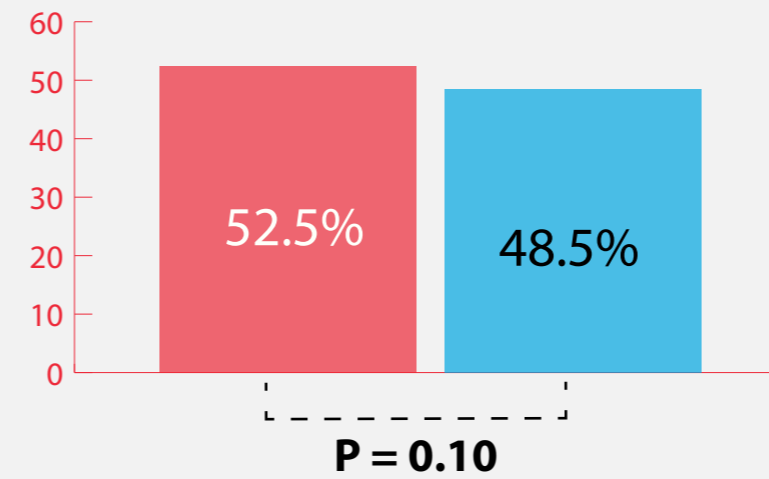
DOPAMINE GROUP

Dopamine was titrated by 2 µg/kg/min up to a maximum dose of 20 µg/kg/min to achieve a mean arterial pressure target of 65 mm Hg.

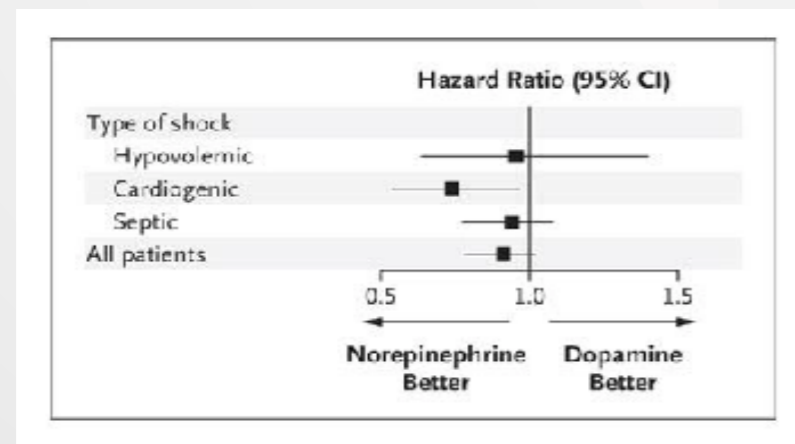
NOREPINEPHRINE GROUP

Norepinephrine was titrated by 0.02 µg/kg/min up to a maximum dose of 0.19 µg/kg/min to achieve a mean arterial pressure target of 65 mm Hg.

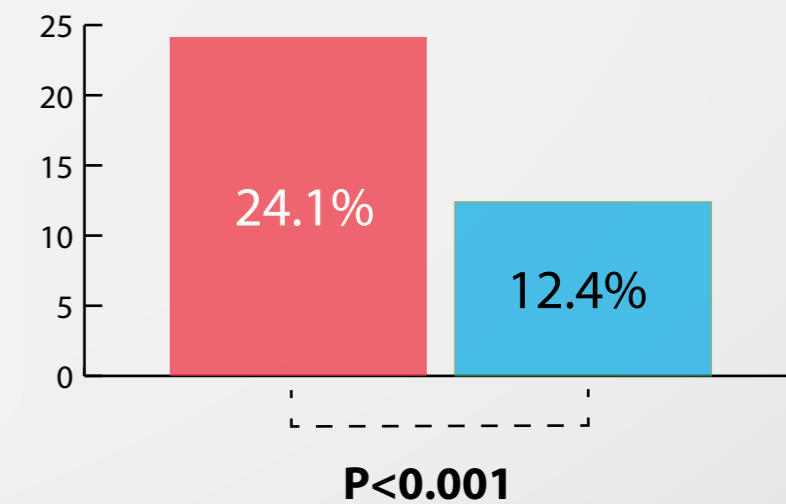
28-day Mortality



Predefined Subgroups



Rate of Arrhythmias



CONCLUSION

The rate of death was not different in patients treated with dopamine compared to norepinephrine. However, dopamine caused more arrhythmias in all groups and was associated with higher rate of death in cardiogenic shock patients.