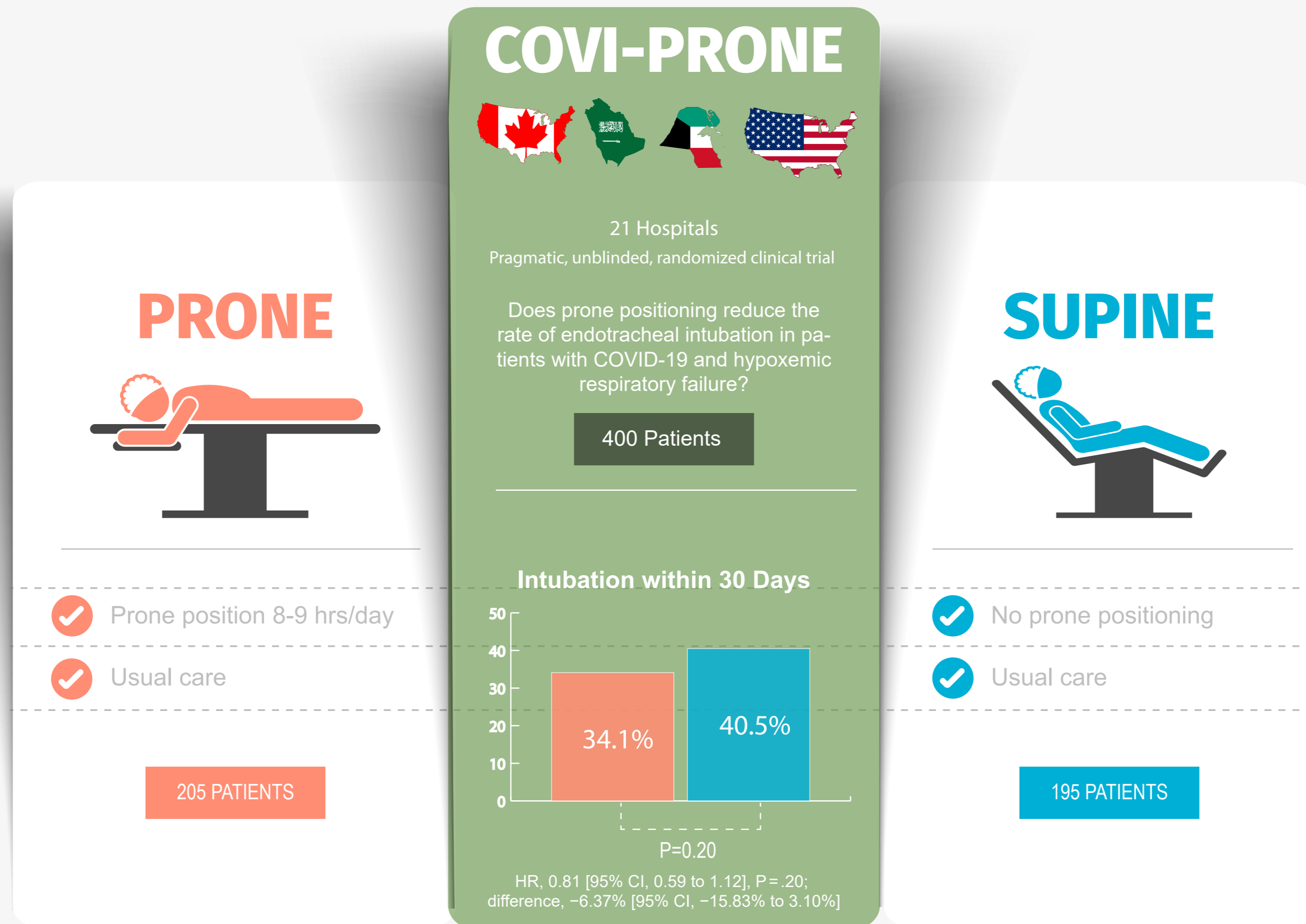


Effect of Awake Prone Positioning on Endotracheal Intubation in Patients With COVID-19 and Acute Respiratory Failure



There was no significant difference between prone positioning and usual care compared to usual care alone in patients with COVID-19 and acute hypoxemic respiratory failure but not requiring intubation. However, the effect size was imprecise, and a clinically important benefit cannot be excluded!