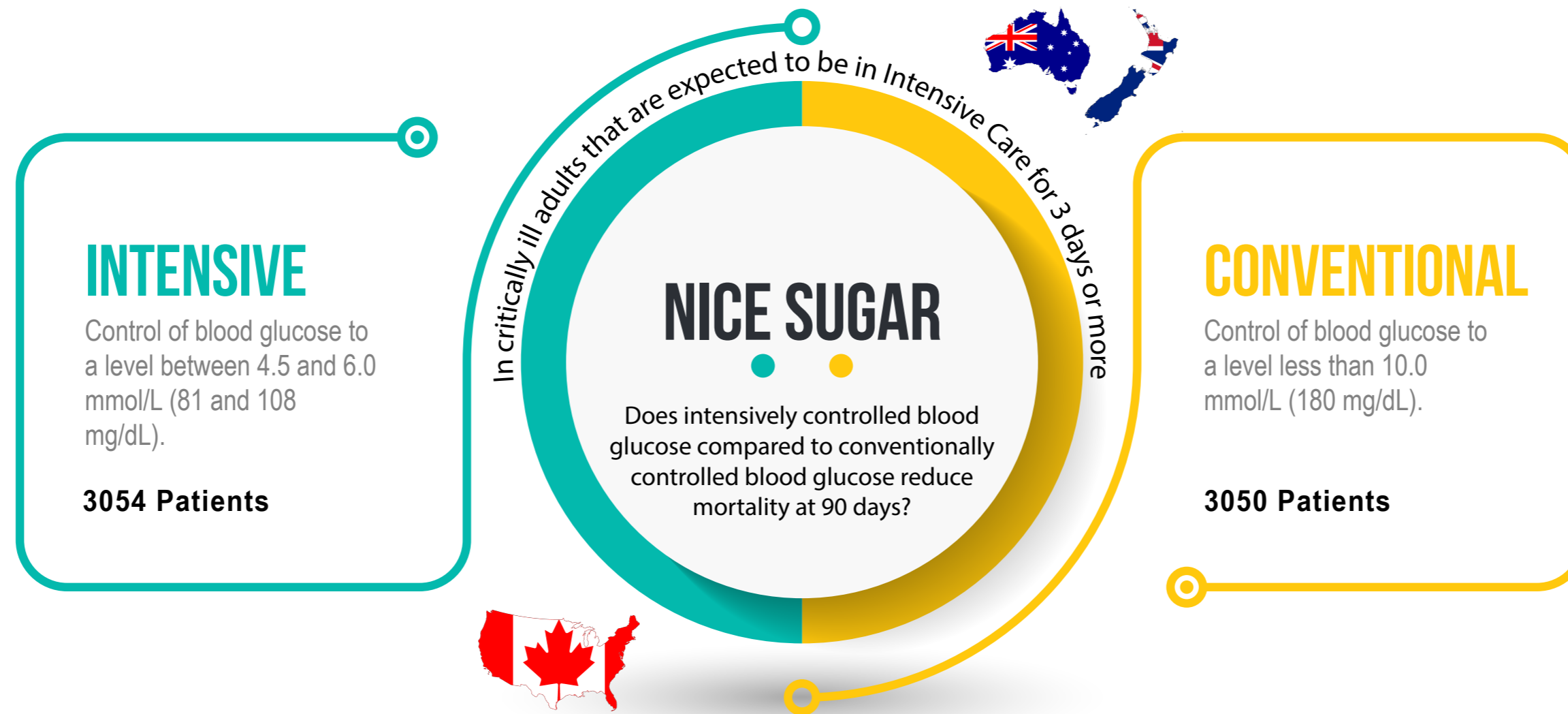


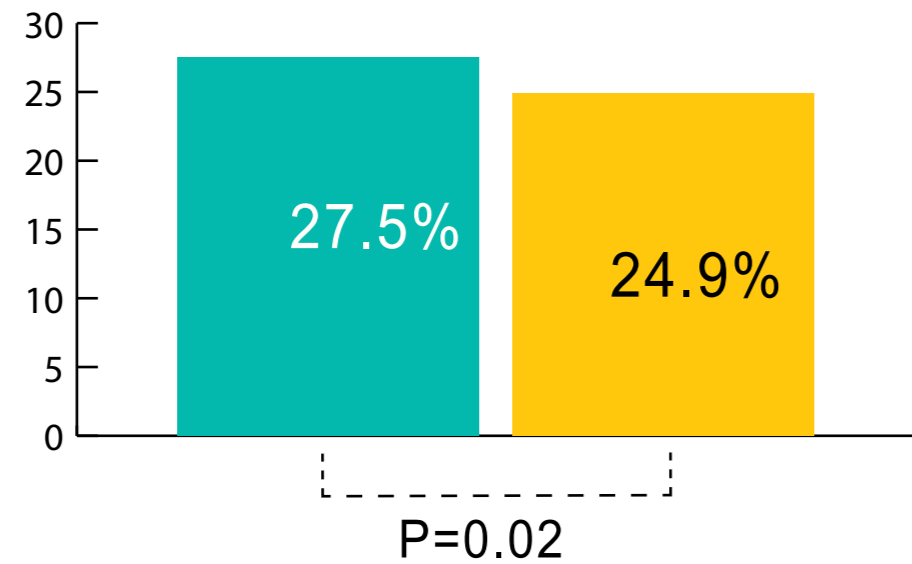
INTENSIVE VERSUS CONVENTIONAL GLUCOSE CONTROL IN CRITICALLY ILL PATIENTS



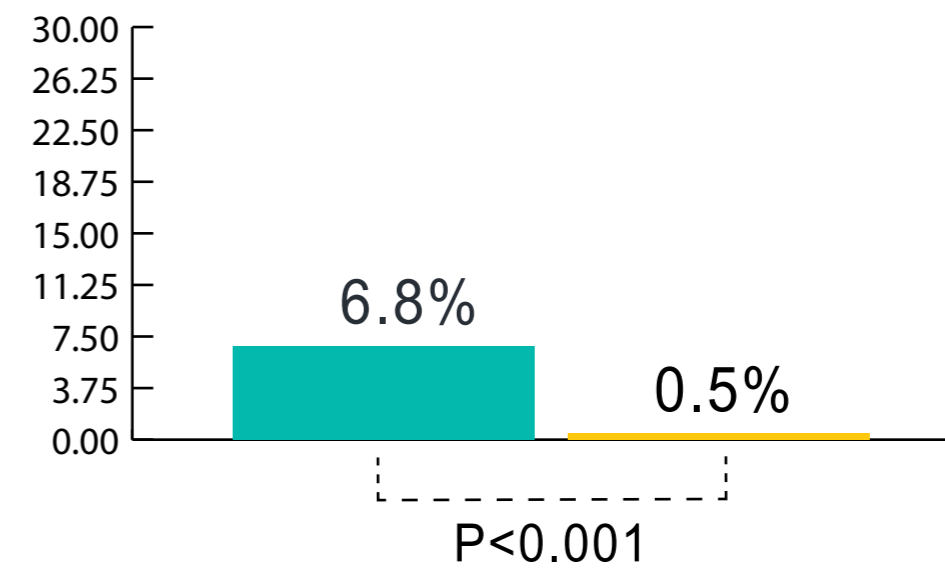
March 26, 2009



90-day Mortality



Severe Hypoglycemia



CONCLUSION

Intensive control of blood glucose (81-108 mg/dL) is associated with a higher 90-day mortality and a higher rate of severe hypoglycemia compared to conventional blood glucose control of <180 mg/dL.